

# Cannonball Century Bike Ride Plan of Action

---

Version: 202400922 v4 (pdf of OpPlan for download - [CBCenturyRideOpPlan.pdf](#))

---

## Overview

---

- [Team](#)
  - [Assignments](#)
  - [Course Access](#)
  - [Check-In](#)
  - [Mission](#)
    - [Parking](#)
    - [Equipment](#)
    - [Operational Parameters](#)
    - [Media Relations](#)
  - [Maps](#)
- 

## Team

---

- **Scott Larimer, KN4RPA ECIC (540--604--3196)**
- Chris Collins, KN4LLC
- Dan Diehl, KQ4JJM
- Erik Misavage, KI4BXU
- John Lanius , KX4JTL
- John Quaderer, AF4JQ
- Kemp Freund, KC3WNO
- Mike Carrancho, KV4RC
- Scott Houppermans, KQ4EOL

Return to [Summary](#).

---

## Assignments

---

**Spotsylvania, Virginia**  
**Saturday, September 28, 2024**

**Sign Up /Assignment Sheet**

Pri: K4TS Repeater 147.015MHz PL 79.7

Alt: K4TS Repeater 443.850MHz PL79.7 Analog

Station (dist to repeater)	Location	Schedule Check-in 30 min before opening	Call	Name	Email/Cell
Net Control/ Start/Finish 16.6 mi	Massaponax High School 8201 Patriot Hwy, F'burg, VA 22407 Behind HS near Football Stadium	0630-1700	KQ4EOL	Scott Houppermans	
Director Shadow - TBD	Massaponax High School 8201 Patriot Hwy, F'burg, VA 22407 Behind HS near Football Stadium	0630-1700	KN4RPA	Scott Larimer	
SAG 1	Massaponax High School 8201 Patriot Hwy, F'burg, VA 22407 Behind HS near Football Stadium	0700-1730	KC3WNO	Kemp Freund	
SAG 2			KN4LLC	Chris Collins	
SAG 3			KX4JTL	John Lanius	
SAG 4					
SAG 5					
A1: Berkley Elementary School 11.3 mi	5979 Partlow Road Spotsylvania Courthouse, VA 22551	0830-1100	KV4RC	Mike Carrancho	
A2: Elk Creek Baptist Church 21.1 mi	5916 Kentucky Springs Rd Bumpass, VA 23024	0930-1400	AF4JQ	John Quaderer	
A3: Caroline Supermarket 19.2 mi	19268 Partlow Rd Beaverdam, VA 23015	1030-1500	KQ4JUM	Dan Diehl	
A4: Bethel Baptist Church 15.5 mi	14036 S River Rd Woodford, VA 22580	0830-1630	KI4BXU	Erik Misavage	

[Assignments](#)

Return to [Summary](#)

## Course Access

No special access is required for overall access to the course. Please wear your Emergency Communications RVARC Event Staff vest if you have one or contact me to borrow one of the loaners. All event staff and participants are being told to look for the RVARC vest.

Return to [Summary](#)

## Check-in

---

Check-ins vary for this event. Please see the assignment sheet. Check-ins are 30 minutes before the rest stop opens. The times on the assignment sheet are the tentative rest stop opening and closing times. Rest stops open and close at various times. Closing times are approximate. Please get permission from Net Control before closing down your station. Some positions are a good trek. Please make sure you give yourself plenty of time to get onsite and setup any equipment prior to your check-in time.

Return to [Summary](#).

---

## Mission

---

Our primary mission is eyes on the course to provide safety. In the event of a emergency, contact Net Control as soon as possible. Since this is a very large course knowing your location and calling 911 may be your quickest response for critical emergencies. Once safe please contact Net Control immediately. Safety is our number one job.

Our secondary job is to relay information from rest stops, and back up the Cannonball Bike Ride personnel. Please be ready to relay information from the personnel at your rest stop to through Net Control to race operations and from race operation through Net Control to your rest stop personnel. You may also be asked to call for assistance for riders with mechanical issues with their bikes.

This event will be comprised of 3 different bike rides, with 3 slightly different routes, all starting and ending at the Massaponax High School . The Century ride (100 mi), the Metric ride (67 mi), and the 1/2 Metric (32 mi). There will be a safety briefing for the riders at 0750 followed by an organized start with police assistance at 0800. The last rest stop is currently scheduled to be close at 1600 and they will begin closing down Massaponax High School at 1700.

If you want to see the full information on the race it can be found at <https://bikefred.com/Cannonball-Century>

Return to [Summary](#).

## Parking

Parking should be available at all rest stops. Please park in legal parking spaces. **Do not pull up onto a residents lawn.**

Return to [Summary](#).

## Equipment

Please have your RVARC vest on if you have one. Please let me know if you don't have one and I'll make arrangement to get you a loaner in advance.

This is a very large course. Most stations will not reliably be able to hit the repeater with an HT only. Other the closest station is 11.3 miles from the repeater. All stations will need at least a mobile radio and some stations will most likely need a mobile an a mast.

We have been requested to provide 5 mobile operators for the SAG vehicles. For those operators an HT with a mobile antenna is a minimum requirement. A mobile radio with a battery source or power limiting to 25W so that it is possible to use the vehicles auxiliary power port and external antenna may be needed.

Return to [Summary](#).

## Operational Parameters

Our primary frequency will be the K4TS VHF repeater 147.015(+) PL79.7. Our backup alternate repeater is the K4TS 70cm 443.850(+) PL79.7 in **ANALOG MODE**. Please have both programmed into your radio in advance.

If all else fails I have everyone's cell phone number. Please have the cell phone number for the ECIC (Scott Larimer, KN4RPA ECIC (540--604--3196)) with you in your phone on race day

Return to [Summary](#).

## Media Relations

Any questions asked by the public or the media, are to be directed to the Cannonball Century Ride Officials. Feel free to answer question about amateur radio. We are all spread out, so spreading the word about amateur radio will be everyone's job.

Return to [Summary](#).

---

## Maps

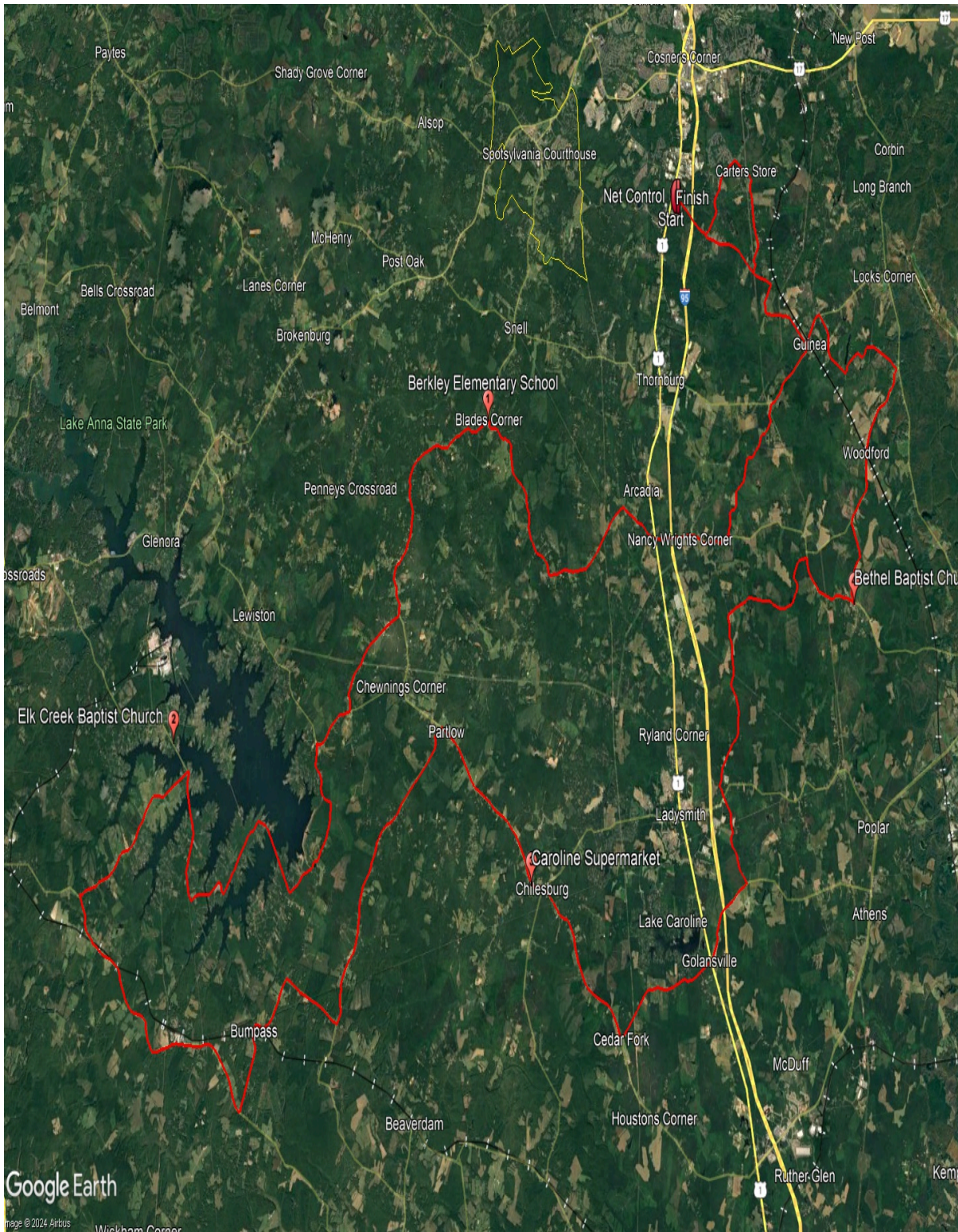
### All Courses Google Earth with Ham Location KMZ

Below is a Google Earth KMZ file of the whole ride including all distances with the ham locations on it. The course is biked in a counter clockwise direction for all rides. This file can be used with Google Earth on your computer or phone. It is a good reference on race day. Right click and "Save Link As" to download.

[Cannonball\\_Century\\_Ride\\_Spotsylvania.kmz](#)

### Cannonball Century Course with Rest Stops

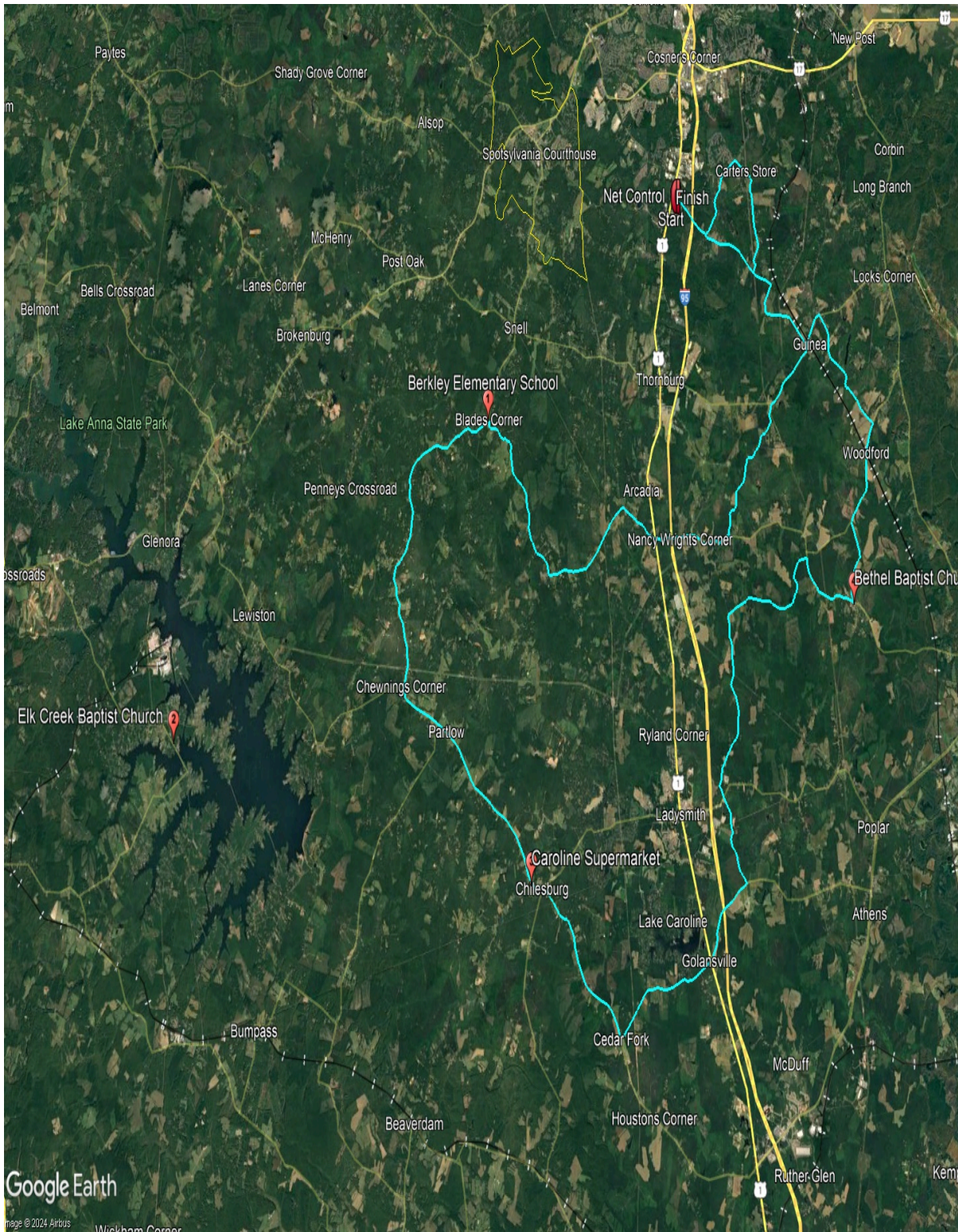




[Cannonball Century Course with Rest Stops](#)

# Cannonball 67 Mile Course with Rest Stops

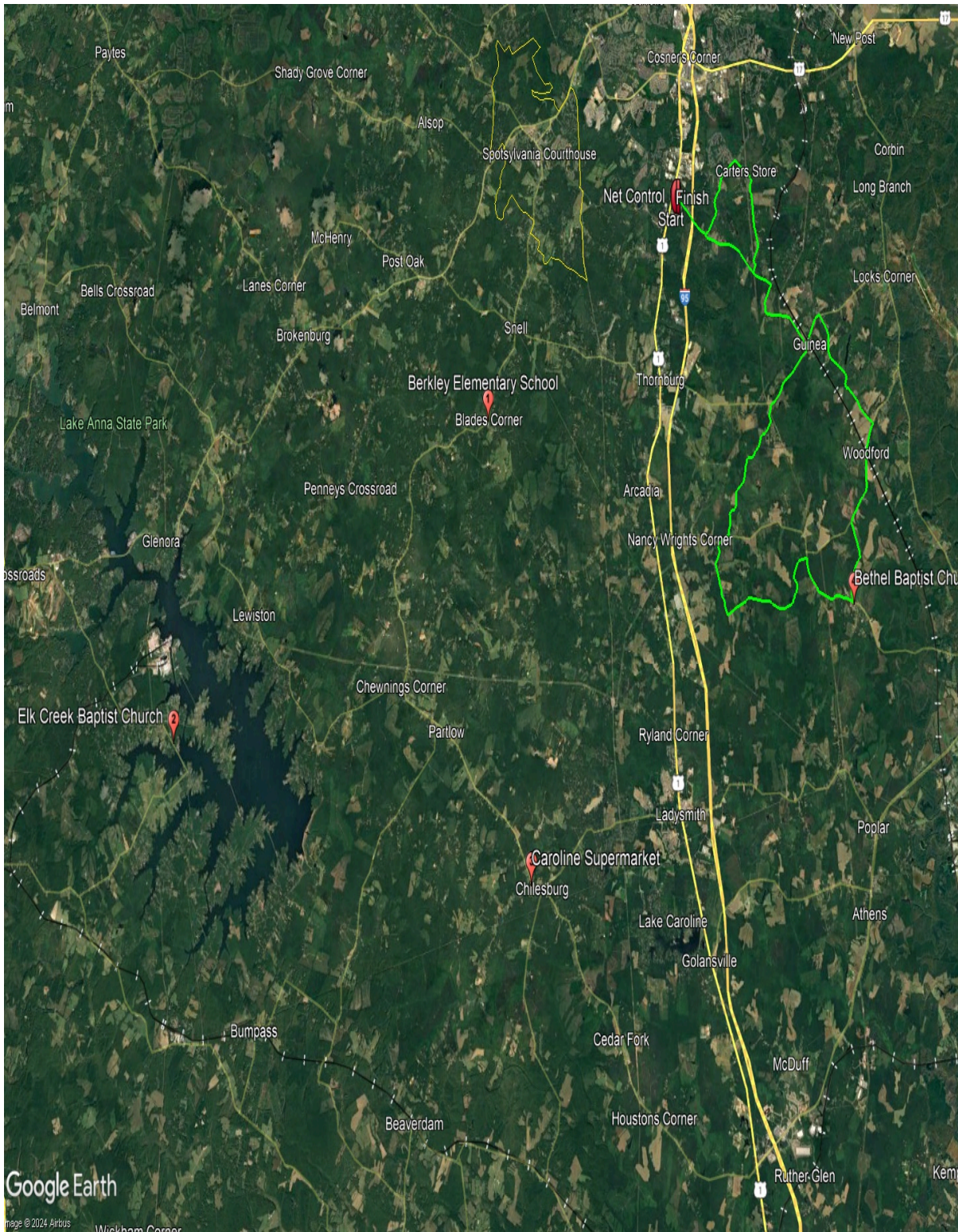




[Cannonball 67 Mi Course with Rest Stops](#)

## Cannonball 32 Mile Course with Rest Stops





[Cannonball 32 Mi Course with Rest Stops](#)

Return to [Summary](#).