

Grand Slamrock Plan of Action

Version: 20250314 v4 (pdf of OpPlan for download - [Grand SlamrockOpPlan.pdf](#))

Overview

- [Team](#)
 - [Assignments](#)
 - [Course Access](#)
 - [Check-In](#)
 - [Mission](#)
 - [Parking](#)
 - [Equipment](#)
 - [Operational Parameters](#)
 - [Media Relations](#)
 - [Maps](#)
-

Team

- **KN4RPA - Scott Larimer- ECIC (540)604-3196**
- KO4LLC - George Bolden
- KN4LLC - Chris Collins
- WB4TYS - John Cross
- KQ4EOL - Scott Houppermans
- KO4DCT - Larry Just
- K4INC - Jim Prokop
- AF4JQ - John Quaderer
- KN4EXG - Tim Wagner

Return to [Summary](#).

Assignments

Grand Slamrock 5K Saturday, 15 March 2025

Net Control on Site: 0700 Station Check in: 0730 Start of Races: 0800
Primary: K4TS VHF Repeater 147.015 (+) PL 79.7 Alternate: AE4ML UHF 442.850MHZ (+) PL79.7

	Station Name	Location	Call	Name	E-Mail / Cell Phone
1	Net Control	Parking lot near Fred Nats Stadium	KO4LLC	George Bolden	
2	Start		KO4DCT	Larry Just	
3	Finish		WB4TYS	John Cross	
4	Medical Liaison		KQ4EOL	Scott Houppermans	
5	Director Shadow	Mobile & Portable w/Director (Kristen Loescher)	KN4RPA	Scott Larimer	
6	1 mi Turnaround/Corner	1mi Turn around/ then move to corner Carl D & Gordon Shelton	AF4JQ	John Quaderer	
7	Crossover	Median of Gordon Shelton & Willow Ln (By Poet's Walk)	KN4EXG	Tim Wagner	
8			K4INC	Jim Prokop	
9	Turnaround	Gordon W. Shelton Blvd.	KN4LLC	Chris Collins	

[Assignments](#)

Return to [Summary](#).

Course Access

No special access is required for the course.

Return to [Summary](#).

Check-in

Net Control is to be on site setting up no later than 0700.

Check-ins are at 0730 for this event. Please be on station and ready for Net Control to start check-ins promptly at 0730.

The tentative schedule is as follows. 1/2 Mile Kids Race starts at 0800. Kids Mile starts at 0820. 5K starts at 0845.

Return to [Summary](#).

Mission

Our primary mission is eyes on the course to provide safety. In the event of a emergency, contact Net Control as soon as possible. If it is a life or death medical emergency 911 is an option. Safety is our number one job.

Our secondary job is to relay information to/from event staff. As part of this please relay the first male and female runner past your station with bib number for each race.

Return to [Summary](#).

Parking

Do not park on the actual race course or block anyone's driveway. There are plenty of close by parking lots to use.

Return to [Summary](#).

Equipment

Please have your RVARC vest on if you have one. Please let me know if you don't have one and I'll make arrangement to get you a loaner in advance. I will also make sure they are available for pickup and return to Net Control on race day.

This event can easily be worked with an HT and 5W by all stations.

Return to [Summary](#).

Operational Parameters

Our primary repeater will be the K4TS 2M 147.015(+) PL79.7 machine.

Our backup frequency will be the the AE4ML UHF 442.850MHZ (+) PL79.7K4TS 2M 147.015(+) PL79.7 machine.

Please program both into your radio prior to the event. Net control, will try to monitor both frequencies at all times if possible.

Net control will have everyone's cell phone number.

Return to [Summary](#).

Media Relations

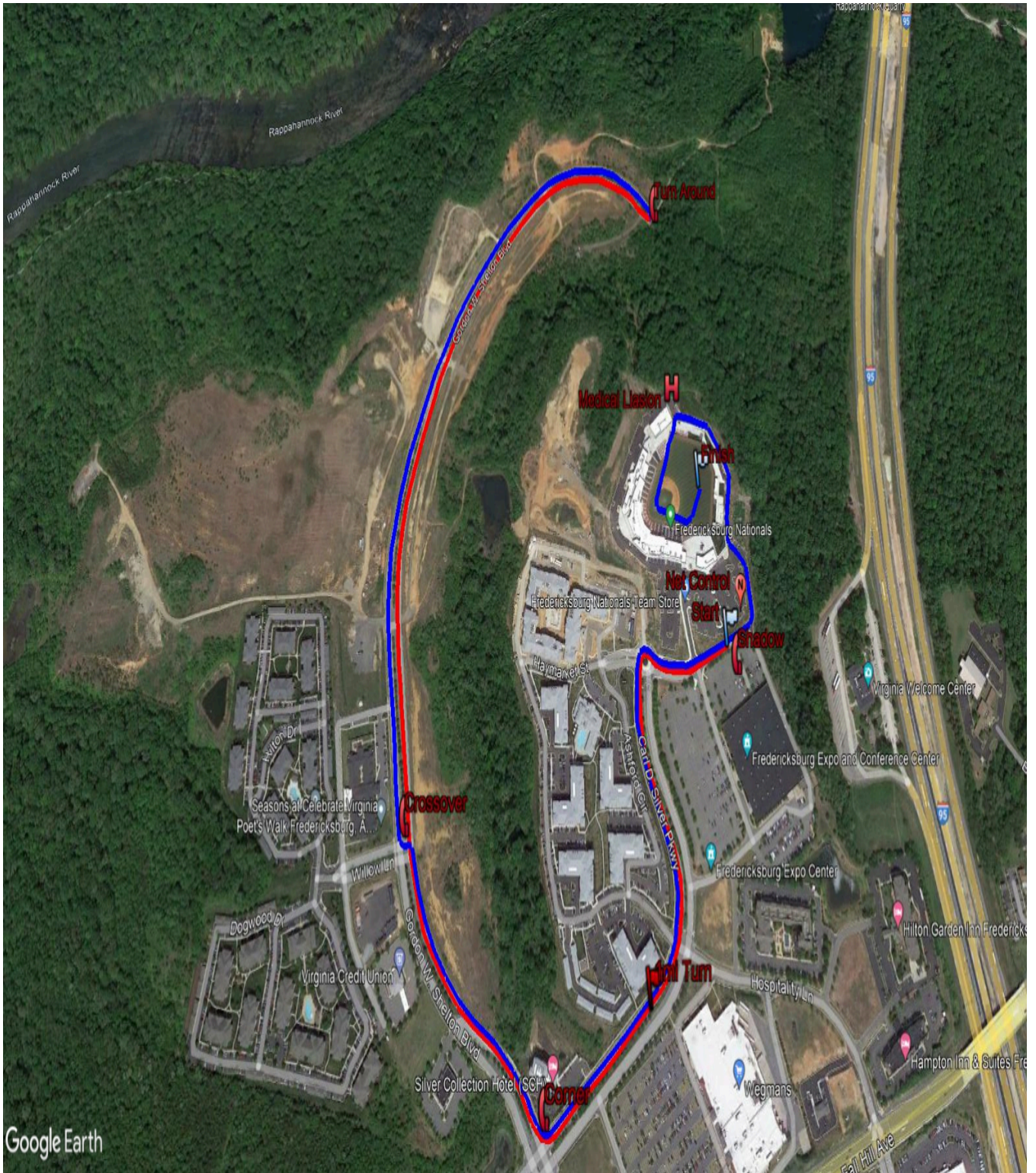
Any questions asked by the public or the media, are to be directed to the Grand Slamrock staff members. Fell free to answer question about amateur radio. We are all some what spread out, so spreading the word about amateur radio will be everyone's job.

Return to [Summary](#).

Maps

Below is the map of the Grand Slamrock and a Google Earth KMZ file of the race.

Fall Foliage Adventure Race Map



[Grand Slamrock Map](#)

Google Earth KMZ file (Right click and "Save Link As" to download.) [Grand Slamrock 5K.kmz](#)

Return to [Summary](#).